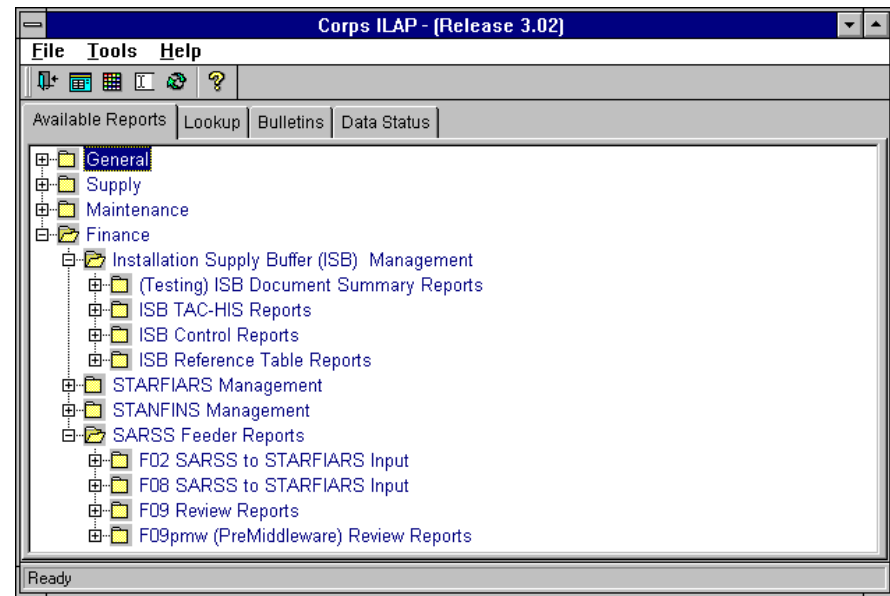
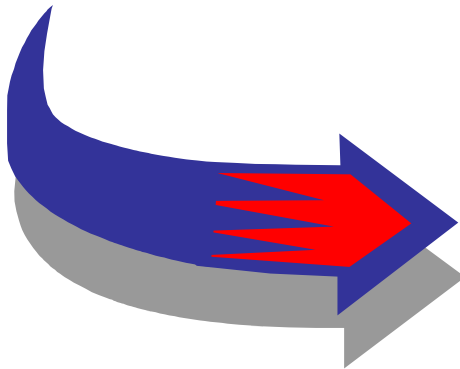




INTEGRATED LOGISTICS ANALYSIS PROGRAM



A Management Tool For Single Stock Fund Implementation





Background

✓ **Situation:** Conversion to Single Stock Fund requires managers to manage in a different way.

✓ **Problem:** New way of doing business requires new management tools.

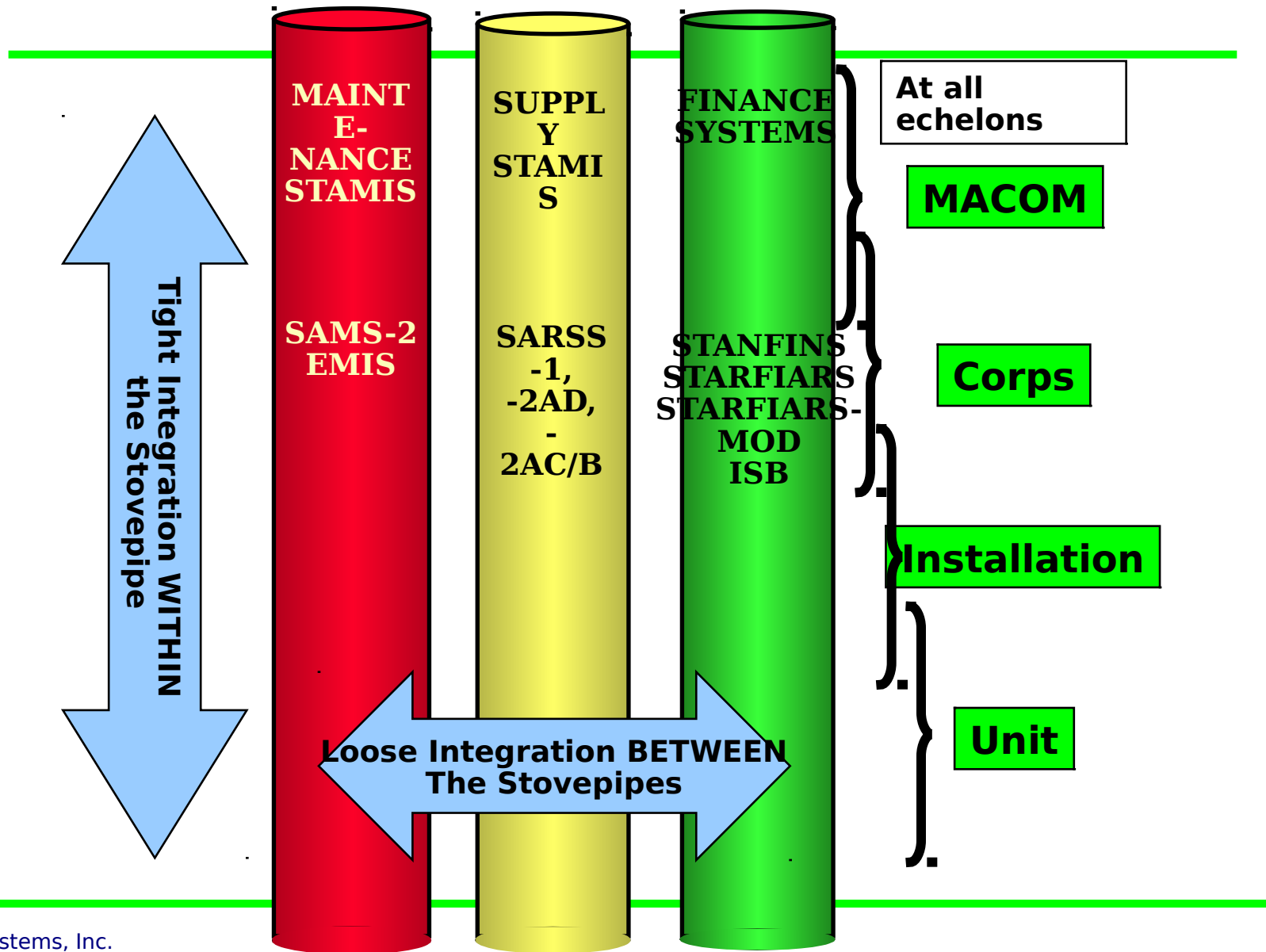


✓ **Solution:**

- ➔ Leverage current ILAP capabilities by adding Single Stock Fund data feeds (middleware & Installation Supply Buffer) and reports.
- ➔ Develop Single Stock Fund management reports to assist managers in the transition to the Single Stock Fund way of doing business.

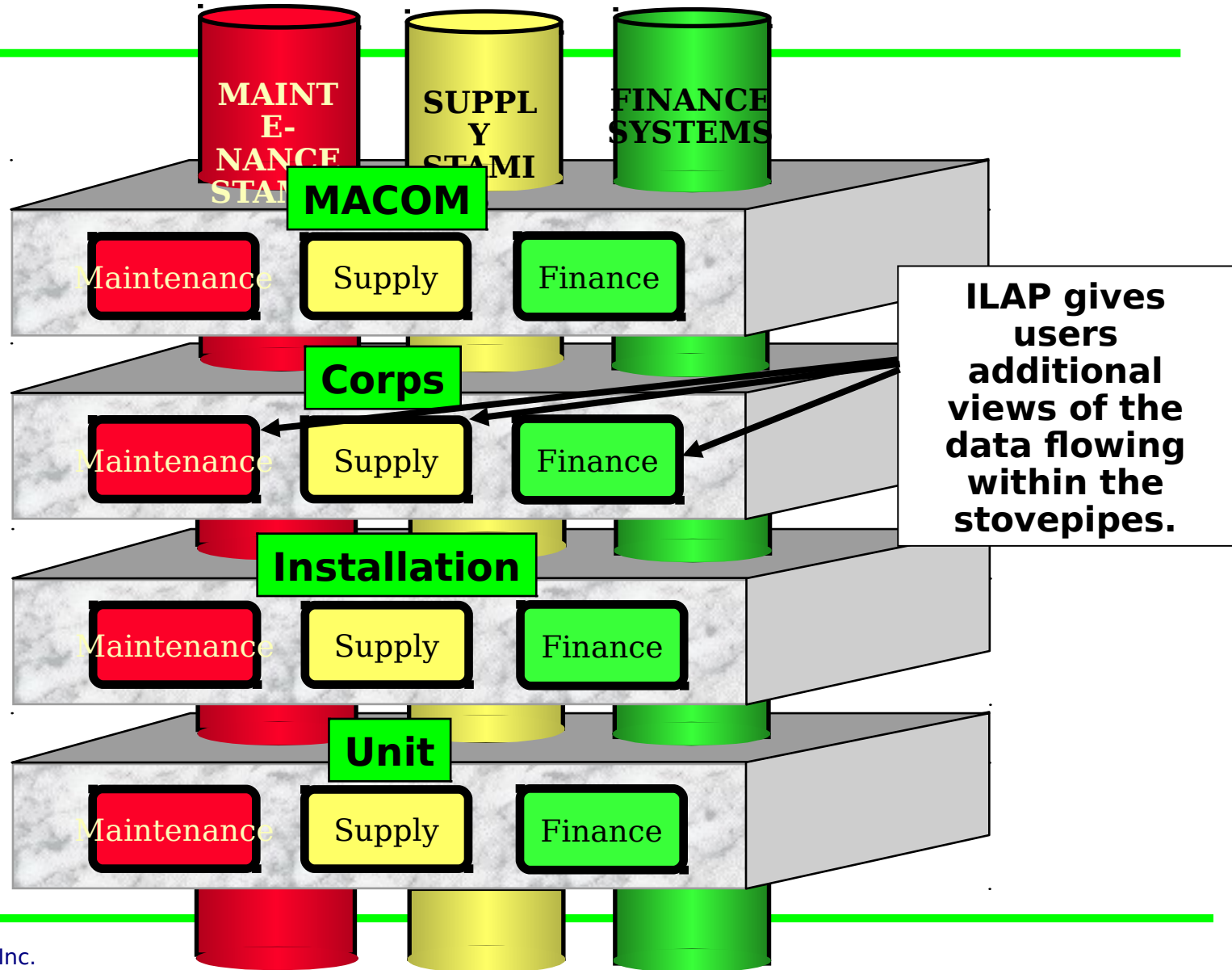


Traditional Stovepipes



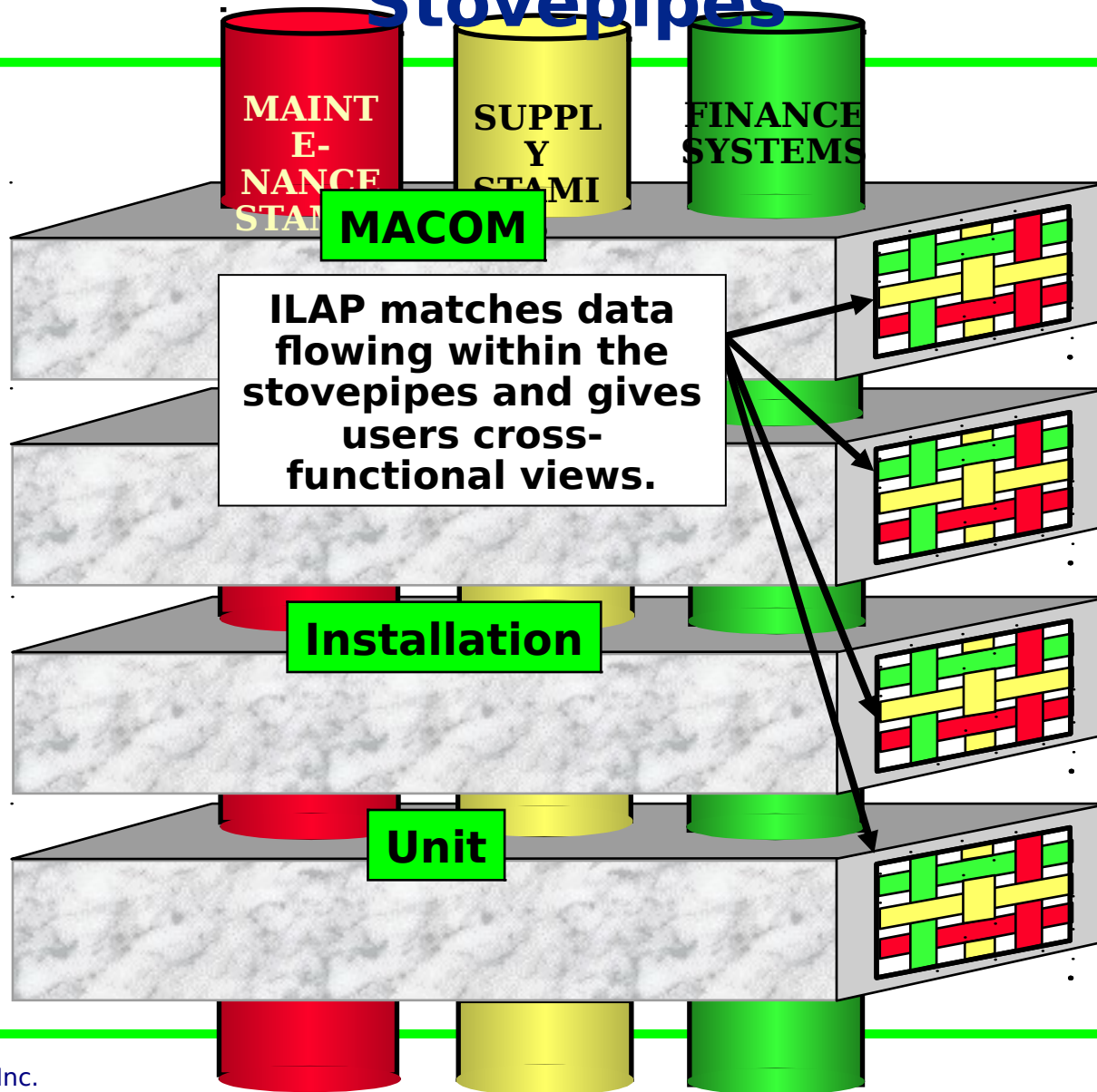


ILAP Augments the STAMIS



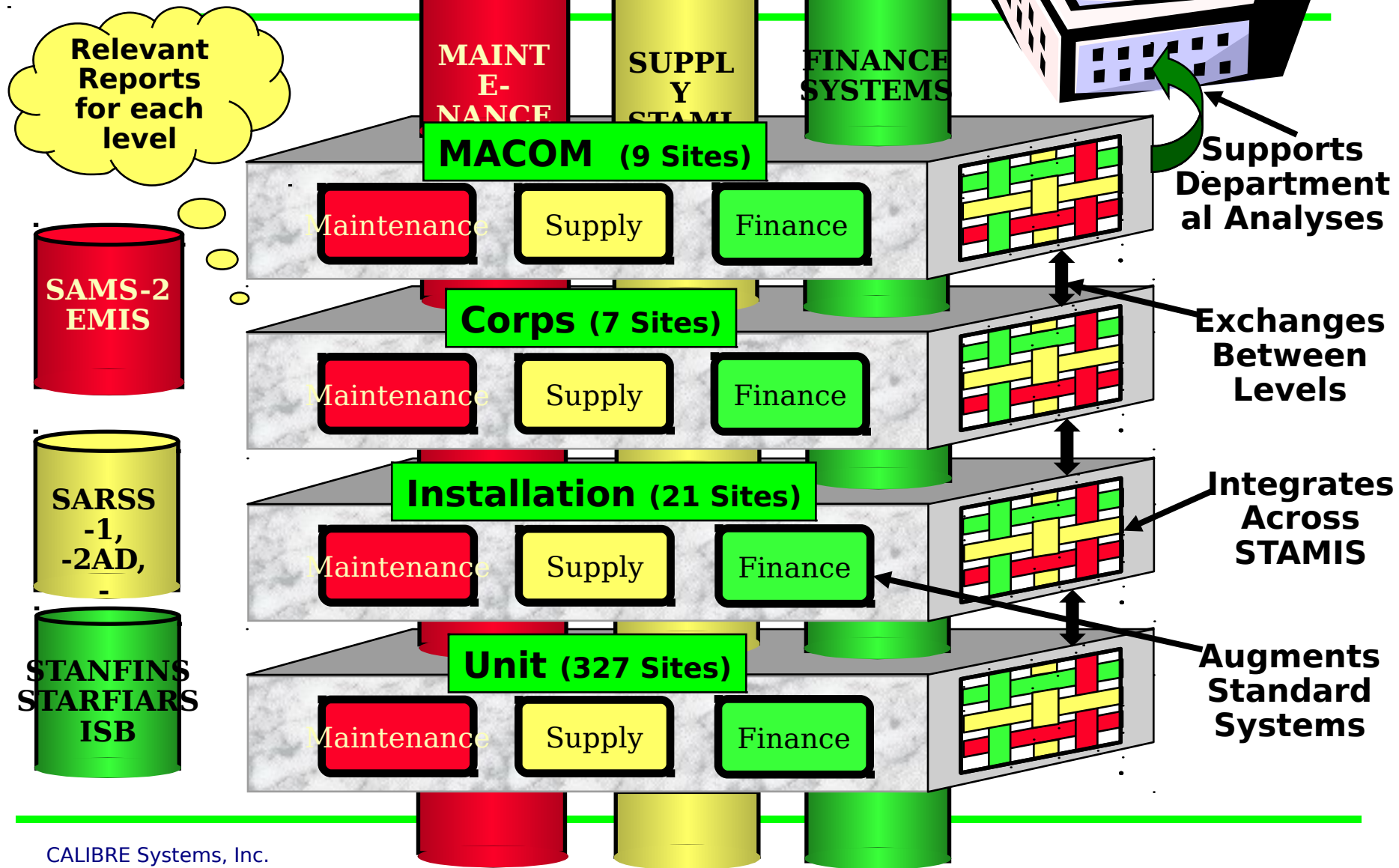


ILAP Integrates Data from the Different Stovepipes





ILAP Today





ILAP: One Name, Three Entities

3

ILAP: the **APPLICATION**

Purpose: Provide Army logistics and resource managers at all levels with timely, integrated logistics and financial data to support enhanced management at a reduced cost and effort.

Attributes:

- Automatic integration and distribution of logistics and financial data

- Augments and supplements STAMIS

- Unit-ILAP serves divisional and non-divisional units

- Corps/Installation/MACOM-ILAP serves appropriate users at each level

- Y2K certified

2

ILAP: the **Data Warehouse**

Purpose: Provide Army logistics and resource managers at all levels with current and historical logistics and financial data

Attributes:

- Data distributed among all sites

- Automatic collection of data from systems of record (e.g., SARSS, STARFIARS)

- Consolidated ILAP server supports HQ DA and all other echelons with integrated, Army-wide data

- Y2K certified

1

ILAP: the **INFRASTRUCTURE**

Purpose: Provide the interconnectivity needed to support automated data exchange Army-wide

Attributes:

- Over 360 interconnected sites

- Command-provided COTS hardware and software

 - Windows NT, Oracle DBMS (like GCSS-Army)

 - 2x and 4x Intel processors

- Application independent

- Communications via NIPRNET

 - Supports thin and thick clients

 - Supports dialup access

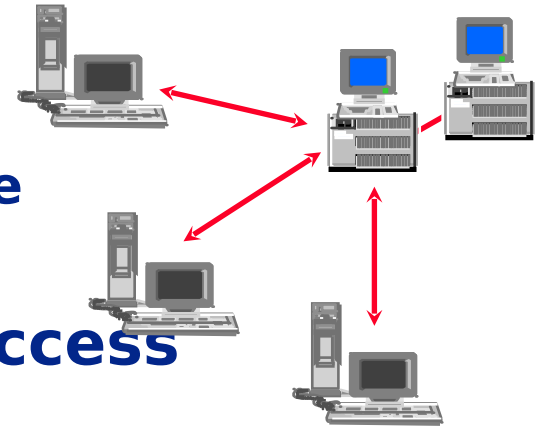
- Technical Support



ILAP Design

✓ Client / Server Technology

- Multiple users at the same time
- Common database for all users



✓ Web Based - Client / Server Access

✓ Uses copies of Data

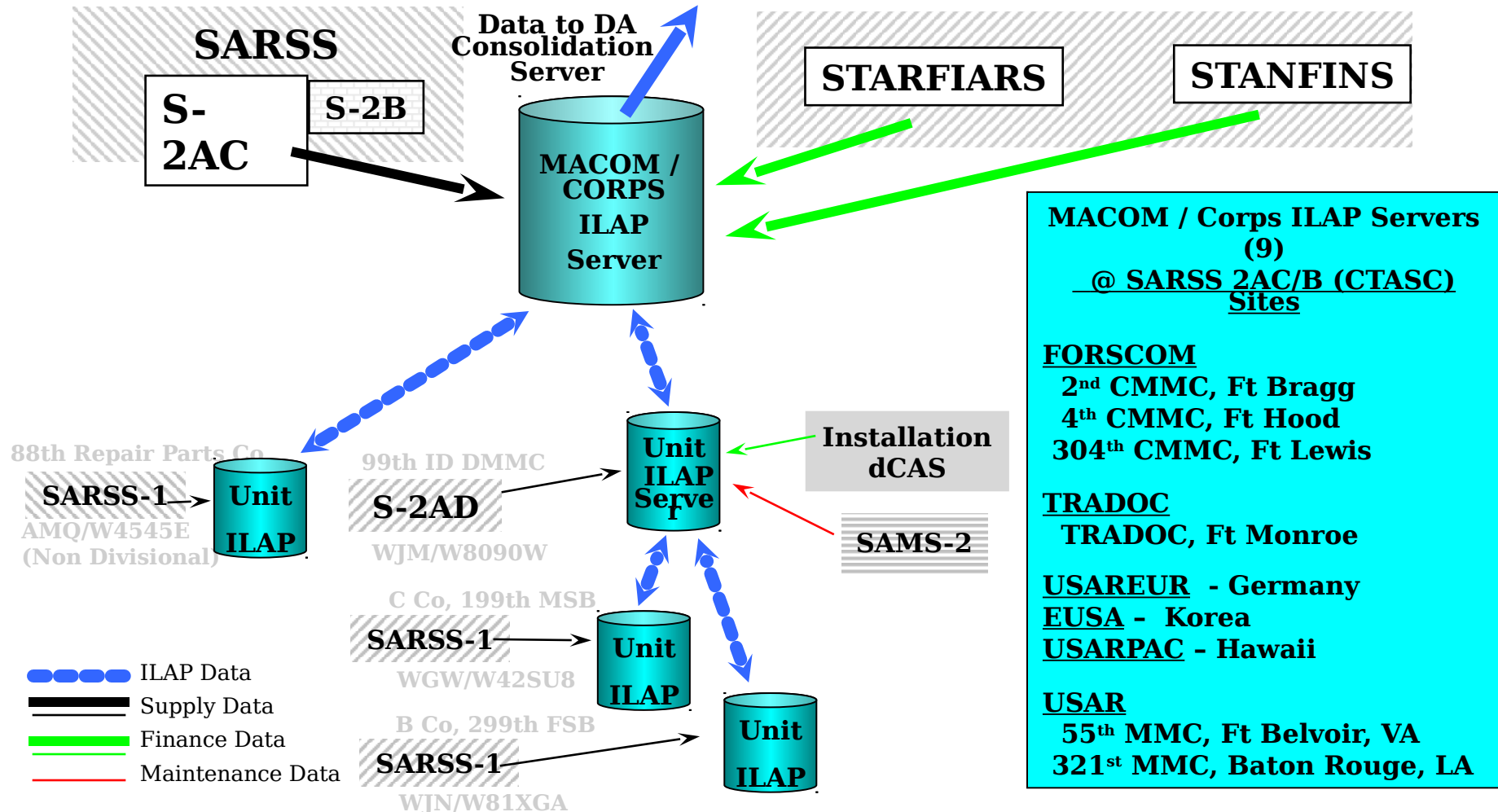
- Takes information that is already there
- Supplements STAMIS / Financial Systems capabilities
- ILAP does not change the STAMIS / Financial Systems data

✓ Integrated Management Information tool with cross-functional integration



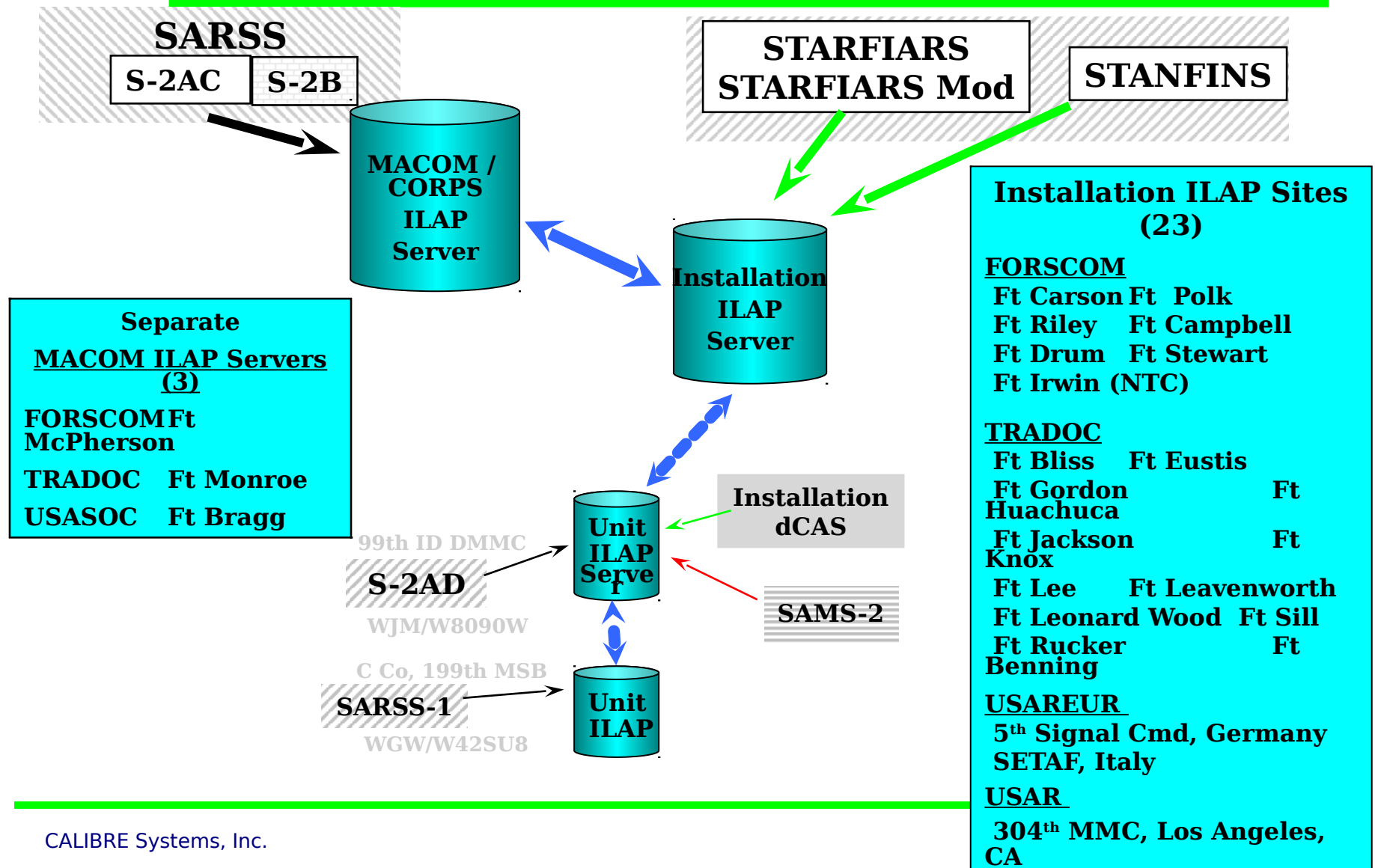


Current ILAP Architecture MACOM / Corps Data Flows





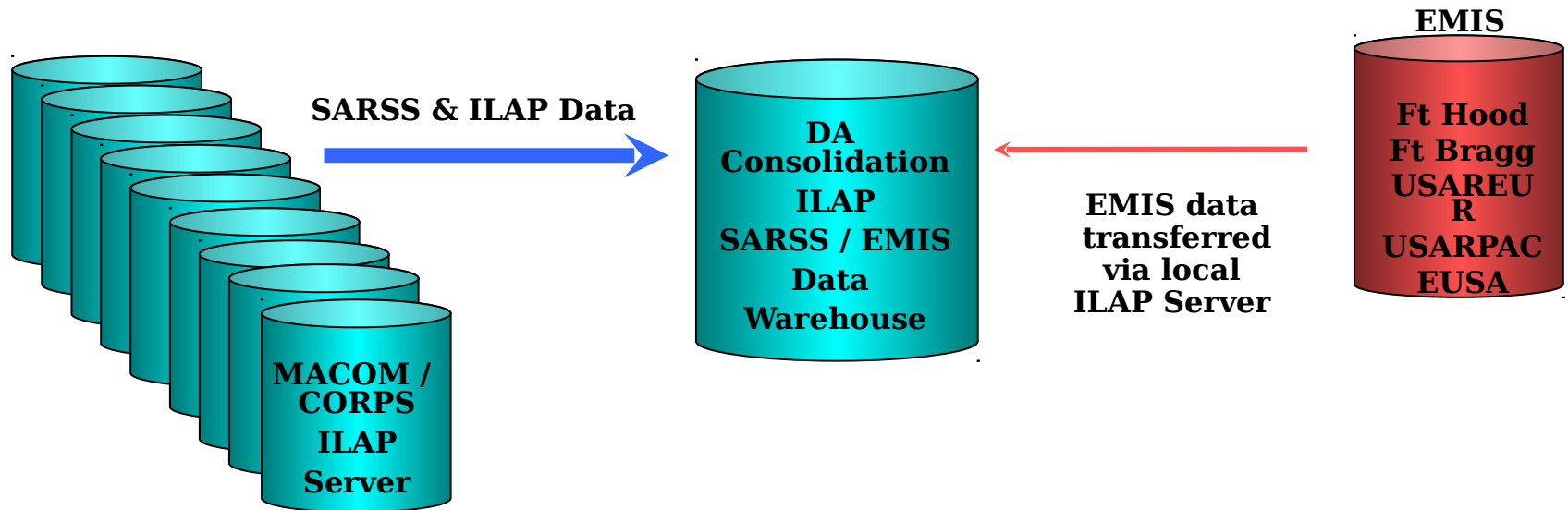
Current ILAP Architecture Installation Data Flows





ILAP Architecture

DA Consolidation Data Flows



ILAP Servers (9) Pushing Data to DA Consolidation Server

FORSCOM

2nd CMMC, Ft Bragg
4th CMMC, Ft Hood
304th CMMC, Ft Lewis

TRADOC

TRADOC Ft Monroe

USAREUR - Germany

EUSA - Korea

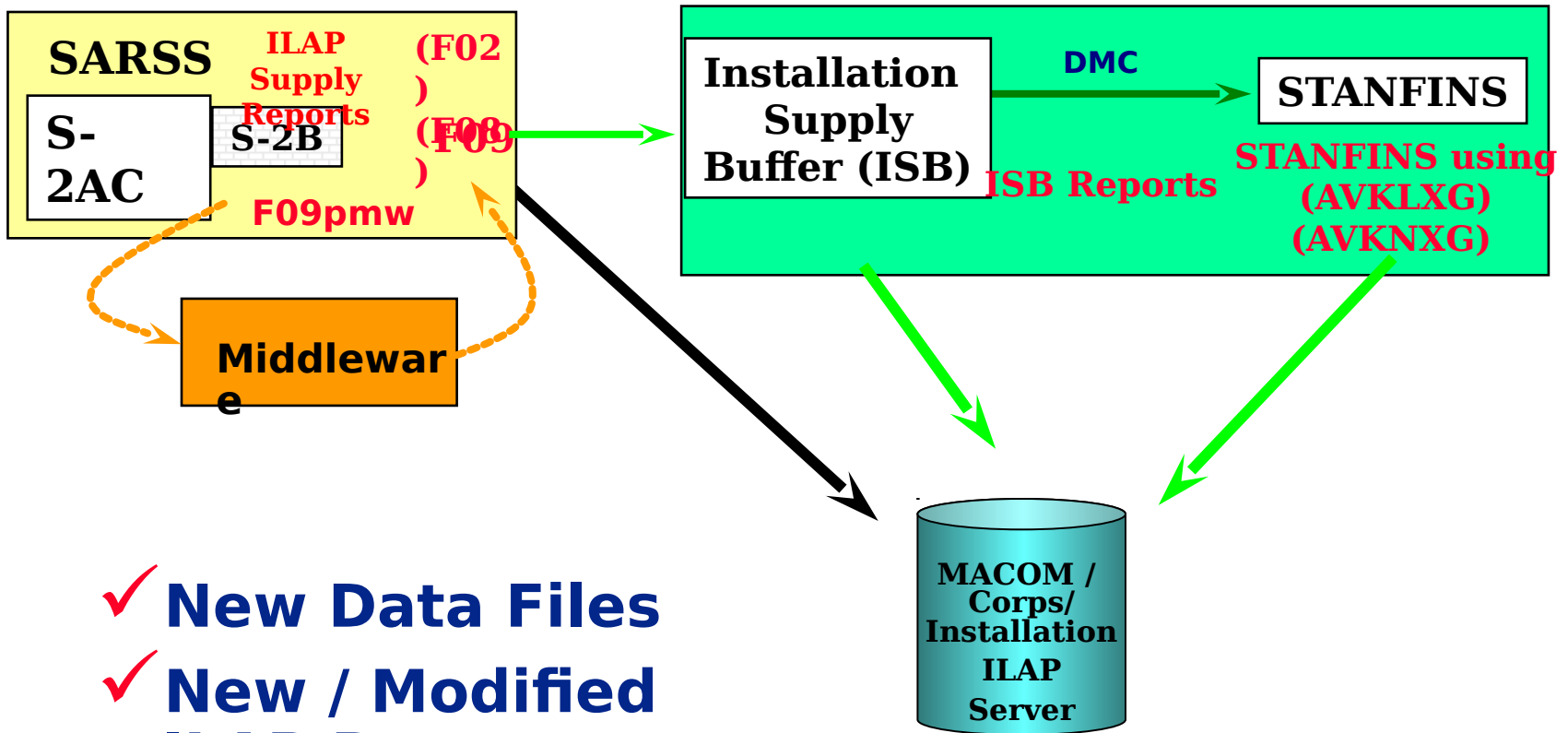
USARPAC - Hawaii

USAR

55th MMC, Ft Belvoir, VA
321st MMC, Baton Rouge, LA



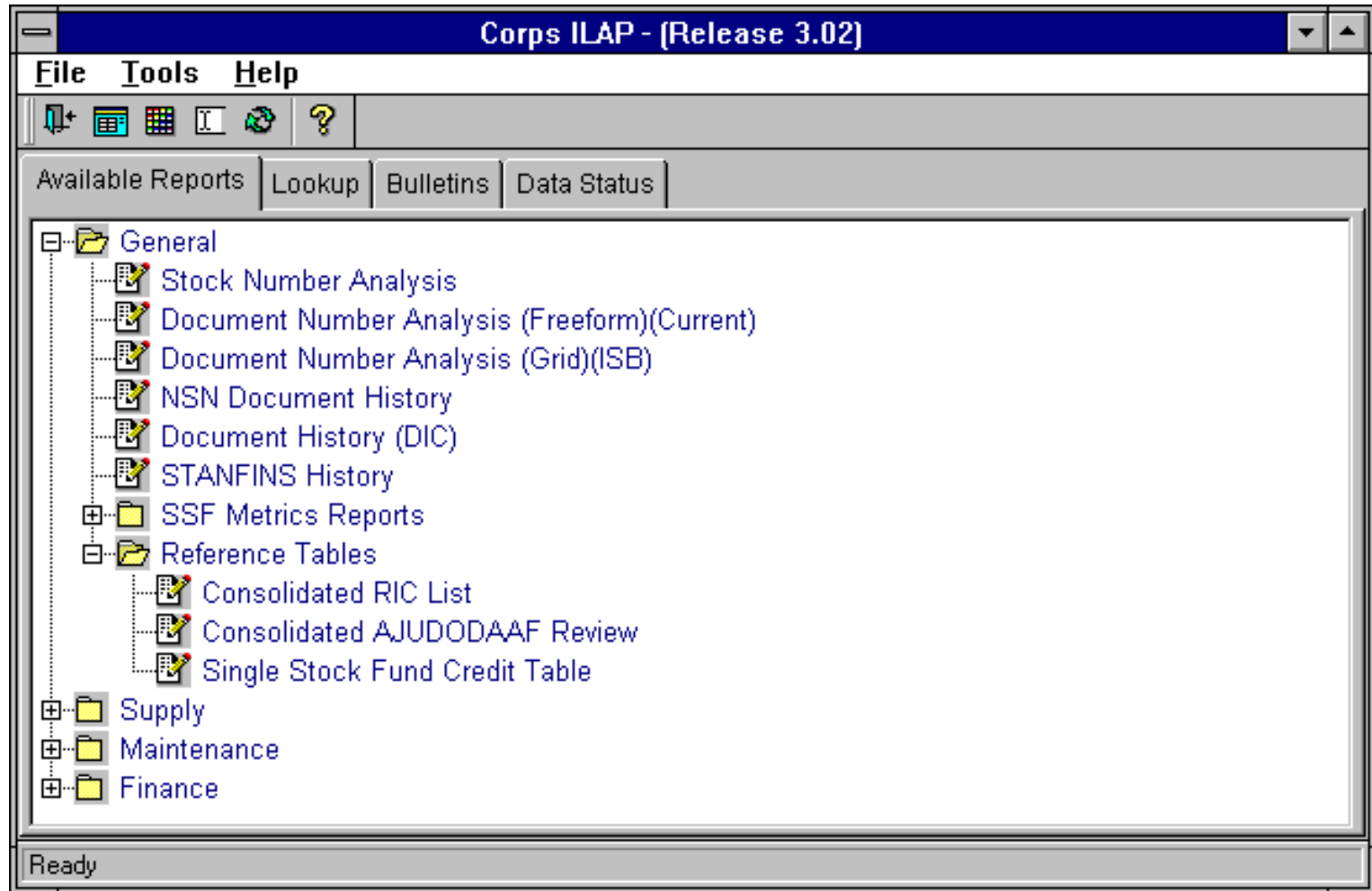
Single Stock Fund Changes



- ✓ **New Data Files**
- ✓ **New / Modified ILAP Reports**



Menu Structure Change for Single Stock Fund





Modified ILAP Report

Document Number Analysis (Grid) (ISB)

ISB Document Analysis TAC-HIS (Document_No) [Grid] [ISB TAC-HIS Reports]

Date: 06/08/00 Document_No: W81ED300470502 Enter a Document No.

00160 { W42SU871230001 }

Print All

Lookup SARSS Document History: Retrieve

DH_Seg	Document_No	DIC	Sfx	Qty	Cnd	Status	A/RAC	Discrep_Cd	Mgr_Cd	Mgt	IPD	D_Txn
ISS00	W81ED300470502	A5A		1	F				E			17-Feb-00
HDR00		D6A		1	F							17-Feb-00

ISB TAC-HIS:

TAC_CD	Document_No	Sfx	DIC	Cnd	F
AP	W81ED300470502		FD2	W	F
	W81ED300470502		D7P	F	Z
	W81ED300470502		FTM	F	F

Historical STANFINS:

Document_No	APC	TA	EOR	Amount	Blk	Final	OA	Oblig	AFCR	Dept	FY	Basic	Lim
W81ED300470502	A5TA	20	26K7	(\$418,936.80)	Y22		76	1	1	21	0	2020	000
W81ED300470502	A5TC	20	26K7	(\$418,936.80)	000		76	1	2	21	0	2020	000
W81ED300470502	5016	42	26K7	\$418,936.80	000		76	1	2	21	X	2020	000

Reports

Find
Sort
Filter

Select Reports

Document History
Catalog/NIIN Credit Data
Installation Supply Buffer (ISB) TAC-HIS Review
Depot Return Summary Review
Historical F09 Review
Historical F09pmw Review
Historical F09pmw/F09 Review
Open STANFINS LXG Review
Historical STANFINS NXG Review

File
Edit
View
Data
Help



Modified ILAP Sub Report

Document Number Analysis (Grid) (ISB)

Catalog/NIIN Credit Data, Document Number Analysis [Grid][ISB] [General]									
FSC: 2835	NIIN: 01-216-8639	Nomenclature: ENGINE,GAS TURBINE,				Price: \$523,671.00			
MATCAT: K21JE	DLR: T	AIMI: 0	SCIC: 0	ARI: R	Haz:	RC: D	MRC: F		
SCMC: 90	RIIC: 8	CIIC: 7	AAC: V	UP: 001	UI: EA	Src_Id: S			
SOS: AKZ	ARC: X	Pn: A	EC: A	Weight:	3640	Cube: 125.434	D_Upd: 01-Jun-00		
FSC: 2835	NIIN: 01-216-8639	Nomenclature: ENGINE,GAS TURBINE,				MATCAT: K21JE			
SOS: AKZ	ICP: AKZ	Price:	\$523,671.00		Serv:	\$417,600.47		Unserv: \$344,852.53	
SCMC: 9	DLR: Y	AMI: Y	Srate:			79.7%		Urate: 65.9%	
MRC: F	ARI: R	AAC: V							



Credit Reference Table for Single Stock Fund

Single Stock Fund Credit Table (Reference Tables)

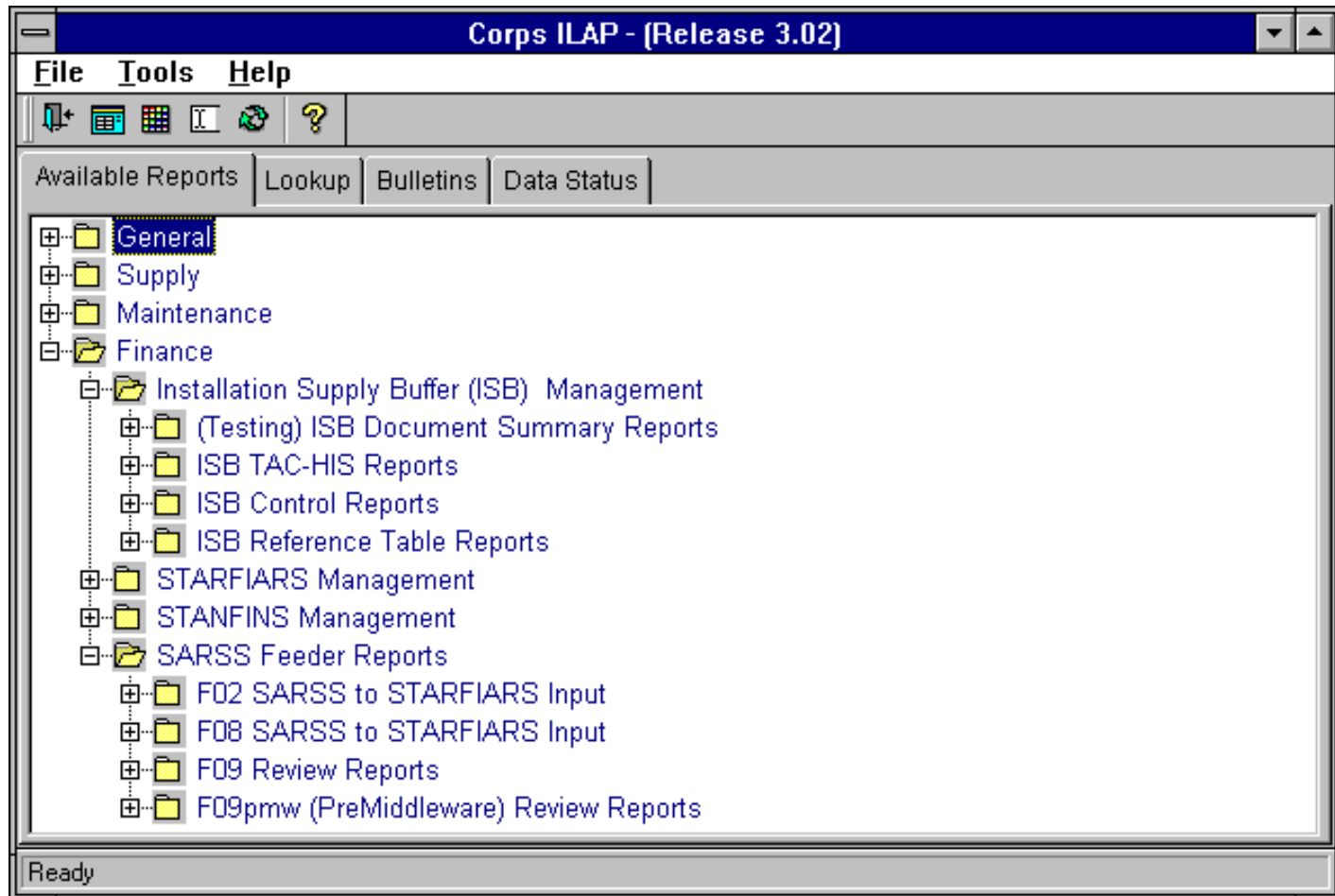
Date

Review "Report Properties" on the "Main Menu" for "Mandatory Entries." This effects "Retrieval Performance." Press the Retrieve Button; then enter criteria as necessary.

NIIN	SOS	ICP	MATCAT	Class	MRC	AAC	Price	Serviceable	Unserviceable	
00-001-6331	S9C	S9C	J2200	9	Z	Z	\$18.89	\$0.57	\$0.00	
00-001-6347	S9C	S9C	J2200	9	Z	Y	\$76.37	\$0.00	\$0.00	
00-001-6350	AKZ	AKZ	K21PP	9	H	L	\$401.00	\$0.00	\$0.00	
00-001-6359	S9I	S9I	T2200	9	Z	J	\$19.92	\$0.00	\$0.00	
00-001-6388	B16	B16	G21QL	9	D	Y	\$2,607.00	\$0.00	\$0.00	
00-001-6390	S9G	S9G	Q2200	9	Z	V	\$6.24	\$0.00	\$0.00	
00-001-6392	B16	B16	G22TT	9	Z	X	\$29.80	\$0.00	\$0.00	
00-001-6393	B16	B16	G22RC	9	Z	Z	\$24.59	\$0.00	\$0.00	
00-001-6396	B16	B16	G2100	9	F	Z	\$169.00	\$0.00	\$0.00	
00-001-6397	S9G	S9G	J2200	9	Z	X	\$140.78	\$0.00	\$0.00	
00-001-6399	S9I	S9I	J2200	9	Z	V	\$1.95	\$0.00	\$0.00	
00-001-6400	S9E	B16	Q21SB	9	H	L	\$628.66	\$482.84	\$341.14	

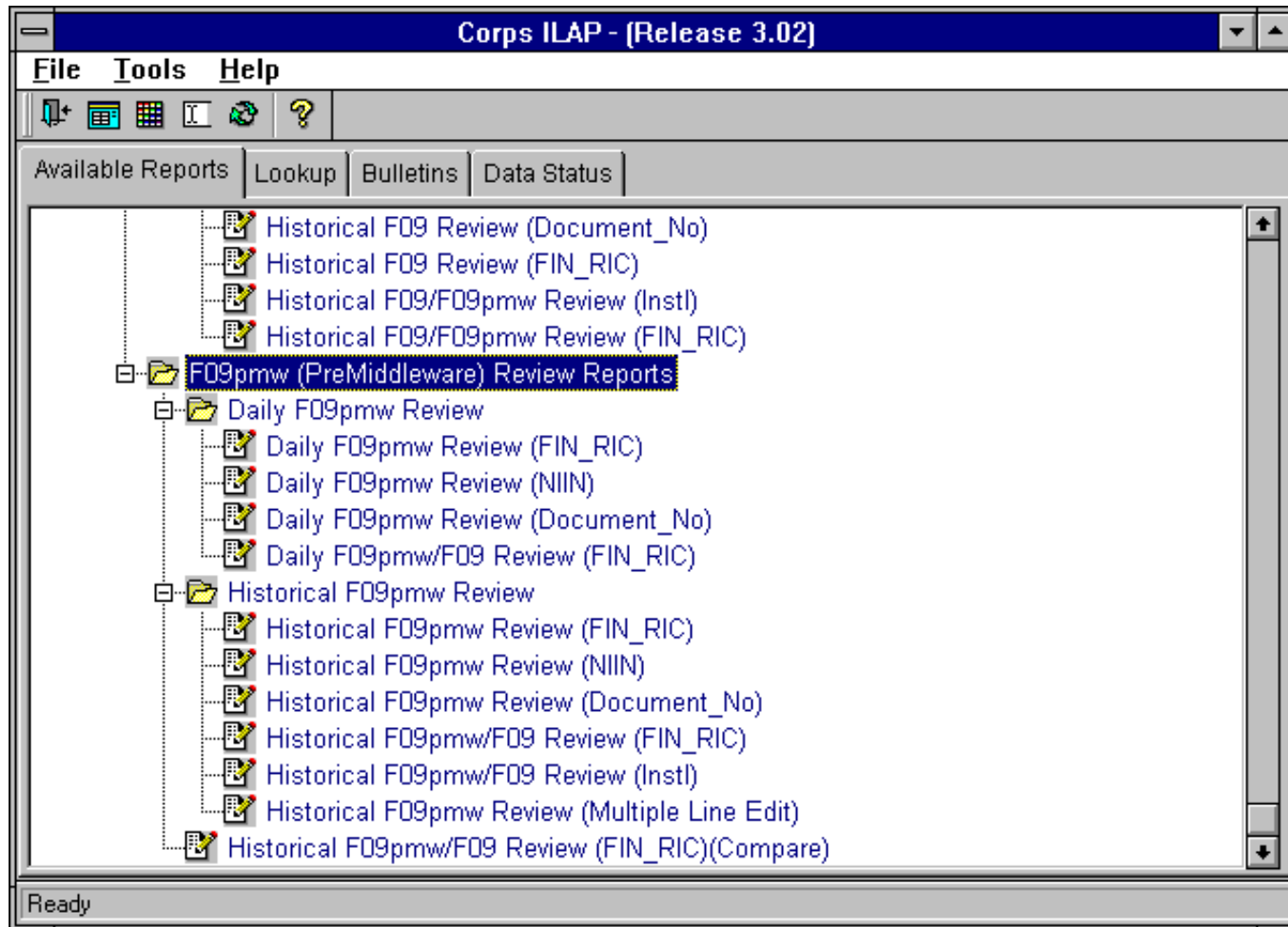


New ILAP Menu Folders





F09 Review Reports Menu under Single Stock Fund





F09 Review Compare Report for Single Stock Fund

Historical F09pmw/F09 Review (FIN_RIC)(Compare) [F09pmw (PreMiddleware) Review]

Date: 06/08/00
00160
Lookup

RIC Fin:
FIN
NTF
SAN
SBG
SFL
Select FIN_RIC.

Rec No: { 1054 }
DIC: A0A { D6% }
SOS: { B17 }

Enter Argument or Leave Blank.
Wildcards OK.

mm/dd/yy Date Format
Start: 06/01/00 End: 6/8/00
Enter Dates or use Drop Down Calendars.

Retrieve

Document_No	Transaction					
W90TPU01570203	A0A	5110002398253	EA00001W90TPU01570203RW81UTH BC	02	K	AKBC
W90TPU01570202	A0A	5120010465079	SE00001W90TPU01570202RW81UTH BC	02	K	AKBC
W90TPU01570201	A0A	5120002888739	SE00001W90TPU01570201RW81UTH BC	02	K	AKBC
W90TPU01570200	A0A	5110002405943	EA00001W90TPU01570200RW81UTH BC	02	K	AKBC
W90TPU01570106	A0A	5120002949514	EA00001W90TPU01570106RW81UTH BC	02	K	AKBC
W90TPU01570105	A0A	5120002930796	EA00001W90TPU01570105RW81UTH BC	02	K	AKBC
W90TPU01570104	A0A	5120005968502	EA00001W90TPU01570104RW81UTH BC	02	K	AKBC

Document_No	Transaction					
W90TPU01570203	A0A	5110002398253	EA00001W90TPU01570203RW81UTH BC	02	K	AKBC
W90TPU01570202	A0A	5120010465079	SE00001W90TPU01570202RW81UTH BC	02	K	AKBC
W90TPU01570201	A0A	5120002888739	SE00001W90TPU01570201RW81UTH BC	02	K	AKBC



ISB Document Summary Depot Return Summary Report

ISB DPO-RTN-SUM (Multiple Line Edit) (ISB Depot Return Summary (DPO-RTN-SUM))

Date: 06/08/00
00160

Lookup

Review "Report Properties" on the "Main Menu" for "Mandatory Entries." This effects "Retrieval Performance." Press the Retrieve Button; then enter criteria as necessary.

mm/dd/yy Date Format
Start: End: 6/8/00

Retrieve

Enter Dates or use Drop Down Calendars.

Document_No	RIC_Stor	SOS	RIC_To	DLR	FC	D_Doc_Closed	EOR	A_Cr_Denied	A_Cr_Grant
WK4K9J00979026	BXK	S9G		N	FG		26GQ	\$0.00	\$8.16
WT4WUE01189028	BXK	S9G		N	FG		26GQ	\$0.00	\$0.59
W68NE301259504	BXK	S9G		N	CD	30-May-00	26GA	\$21.56	\$0.68
WK4K7W01089609	BXK	S9G		N			26GQ	\$0.00	\$12.60
WK4K7W01179609	BXK	S9G		N	FG		26GQ	\$0.00	\$1.26
W81X9C01150095	BXK	S9G		N	FG		26GQ	\$0.00	\$0.15
WK4K9J01259041	BXK	S9G		N	01		26GQ	\$0.00	\$1.53
WK4K7001179054	BXK	S9G		N	FG		26GQ	\$0.00	\$1.06
WK4K7001179061	BXK	S9G		N	FG		26GQ	\$0.00	\$1.06
W81X9C01150086	BXK	S9G		N	FG		26GQ	\$0.00	\$0.17
WK4K7Y01049055	BXK	S9G		N	FG		26GQ	\$0.00	\$0.72
W800DU01089866	BXK	S9G		N			26GQ	\$0.00	\$0.19
WT4WUE01199011	BXK	S9G		N	FG		26GQ	\$0.00	\$0.77



ISB TAC-HIS Document Analysis Report

[Testing] ISB TAC-HIS (Document_No) (ISB TAC-HIS Reports [A-T])

Date: 06/08/00
00160

ISB-HIS: ISB-HIS-A

Document_No: WK4GAC93360191

DIC:

mm/dd/yy Date Format
Start: End: 6/8/00

Lookup Retrieve

Enter Dates or use Drop Down Calendars.

TAC_Cd	Document_No	DIC	Sfx	Cnd	FC	A_NINR	A_PINR	A_UINR	Unit Price
AP	WK4GAC93360191	FA1		W	FG	\$0.00	\$215.00	\$0.00	\$21
AP	WK4GAC93360191	FA1		W	FG	\$0.00	\$215.00	\$0.00	\$21
AP	WK4GAC93360191	FA2		W	FG	\$0.00	\$215.00	\$0.00	\$21
AP	WK4GAC93360191	FA2		W	FG	\$0.00	\$215.00	\$0.00	\$21

Document Count: 4 Sum: \$0.00 \$860.00 \$0.00



ISB Control Reports Document Control

ISB DOC-CTL (Multiple Line Edit) (ISB Document Control (DOC-CTL))

Date: 06/08/00
00160

Review Report Icon "Properties" for "Mandatory Entries".

mm/dd/yy Date Format
Start: 06/01/00 End: 6/8/00

Lookup Retrieve

Enter Dates or use Drop Down Calendars.

Document_No	TAC_Rec	Sum_Rec	Sys_Isl_Cd	Sys_TAC_No	D_Txn	Command	PII
W810Y001290502	G	D	S600	562216	02-Jun-00	FW	
W810Y001290501	G	D	S600	562217	02-Jun-00	FW	
W810Y001290500	G	D	S600	562218	02-Jun-00	FW	
W810Y001250502	G	D	S600	562219	02-Jun-00	FW	
W810Y001250510	G	D	S600	562220	02-Jun-00	FW	
W810Y001250511	G	D	S600	562221	02-Jun-00	FW	
W810Y001250506	G	D	S600	562222	02-Jun-00	FW	

Document Count: 512

After Retrieval - Click on a Row for Supply Data

Document No: W810Y001290502 **Q_Orgn:** 1 **NIIN:** 01-209-1881 **Nomen:** INSULATION BLANKET,

Price: \$36.72 **FSC:** 2510 **UI:** EA **MATCAT:** J2200 **MRC:** Z **RC:** Z **ARI:**

SCMC: 9K **AIMI:** 0 **DLR:** F **SOS:** S9C **AAC:** D **EC:** C

RICC: 0 **ARC:** X **CIIC:** U **PN:** A **Catalog D_Upd:** 01-Jun-00



Reference Table ISB DODAAC

ISB DODAAC (ISB Reference Table Reports)

Date: 06/08/00
00160

Press the "Retrieve" Button to review Report Information.

Lookup Retrieve

DODAAC	Apn_FY_Dsg_Cr	BPA_Idc	Sys_Isl_Cd	Cen_Of_Exc_Idc	Command	DBOF_Idc	FC_Cr	JO
WK4GAC	0	N	S600	N	FW	N		ALCK
W68PPA	0	N	S600	N	FW	N		AL2Y
W81MW9	0	N	S600	N	FW	N		BHM2
W81TW6	0	N	S600	N	FW	N		A7GK
W81X9C	0	N	S600	N	FW	N		A5TC
W81UTH	X	N	S600	N	FW	Y		XXXX
W813WF	X	N	S600	N	FW	Y		XXXX
W90AT5	X	N	S600	N	FW	Y		XXXX

DODAAC Cnt: 8



Reference Table ISB Fund Codes

ISB Fund Code (FC) [ISB Reference Table Reports]

Date

06/08/00

00160

Lookup

Press the "Retrieve" Button to review Report Information.

Retrieve

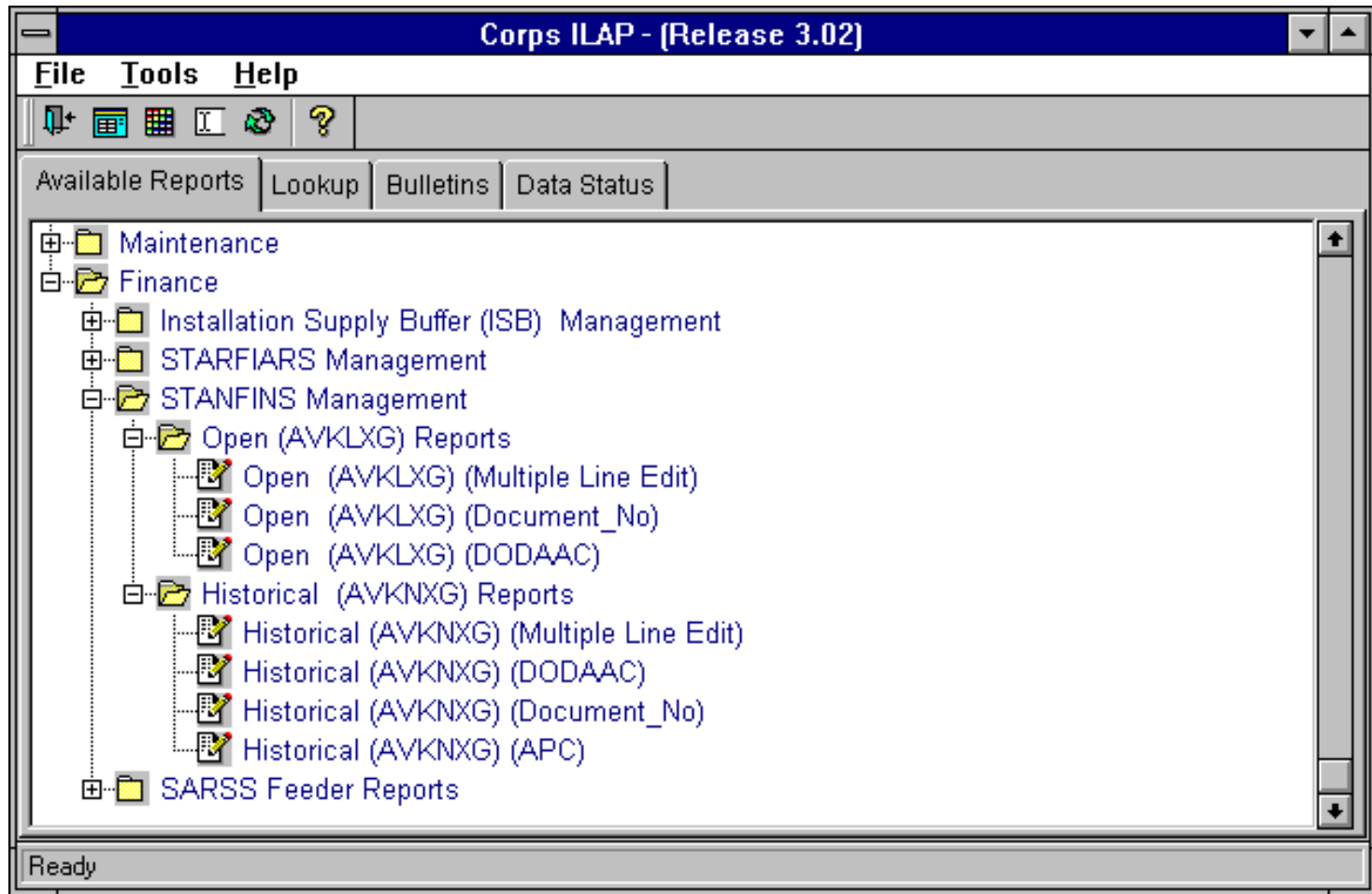
FC	Fund Code Description	DODAAC_Bll	Apn_FY_Dsg	Ap
KA	OPERATION & MAINTENANCE, ARMY RESERVE	W56HZV	7	
KC	TANK AUTOMOTIVE COMMAND	W56HZV	X	
KE	DBOF-DEFENSE RESALE STOCKS (DeCA)-NMV REGION		X	
KI	PROCUREMENT OF AMMUNITION, ARMY	W56HZV	7	
KK	invalid fund code for ft gordon	000000	X	
KM	PROCUREMENT OF WEAPONS & TRACKED COMBAT VEHICLES, ARMY	W56HZV	7	
KP	NONE, BILL BY NON-INTERFUND	W56HZV		
KU	OTHER PROCUREMENT, ARMY	W56HZV	7	
KY	FOREIGN MILITARY SALES	W56HZV	X	
K1	OPERATION & MAINTENANCE, ARMY (OMA)	W56HZV	7	
K2	DEPARTMENT OF HEALTH AND HUMAN SERVICES	753270		
K3	RDTE, ARMY	W56HZV	7	
K9	US ARMY MATERIEL DEVELOPMENT READINESS CMD DIV DBOF	W56HZV	X	

Document Count:

408



STANFINS Menu Structure for Single Stock Fund





New STANFINS Source data (AVKLXG) for STANFINS reports

Open [AVKLXG] (Multiple Line Edit) [Open [AVKLXG] Reports]

Date: 06/09/00
00161

mm/dd/yy Date Format
Start: 06/01/00 End: 6/9/00

Lookup Retrieve

Review Report Icon "Properties" for "Mandatory Entries".
Enter Dates or use Drop Down Calendars.

Document_No	A_Obl	DC_Obli	A_Acru	DC_Accru	A_Disb	DC
WK4K7X93279028	\$3,150.00	127	\$0.00	0	\$0.00	
WK4K7X93279028	\$3,150.00	150	\$0.00	0	\$0.00	
WK4K7U00249214	\$6,300.00	35	\$0.00	0	\$0.00	
WK4K7300270618	\$105.00	35	\$0.00	0	\$0.00	
W81X9C934226K5	(\$3,150.00)	150	\$0.00	0	\$0.00	
W81X9C909626K5	(\$1,680.00)	150	\$0.00	0	\$0.00	
W81UUC01093070	\$15,624.00	111	\$0.00	0	\$0.00	
W81UUC00903000	\$27,830.00	101	\$0.00	0	\$0.00	

After Retrieval - Click on a Row for Supply Data

Document No: WK4K7U00249214 **Q_Orgn:** 60 **NIIN:** 01-381-6033 **Nomen:** MOUNT VIEWER

Price: \$105.00 **FSC:** 5855 **UI:** EA **MATCAT:** G22SZ **MRC:** D **RC:** D **ARI:**

SCMC: 9G **AIMI:** **DLR:** T **SOS:** B16 **AAC:** V **EC:** D

RICC: 0 **ARC:** X **CIIC:** U **PN:** A **Catalog D_Upd:** 01-Jun-00



New STANFINS Source data (AVKLXG) for STANFINS reports

Historical [AVKNXG] (Multiple Line Edit) (Historical [AVKNXG] Reports)

Date: 06/09/00
00161

Review Report Icon "Properties" for "Mandatory Entries".

mm/dd/yy Date Format
Start: 05/01/00 End: 6/9/00

Lookup Retrieve

Enter Dates or use Drop Down Calendars.

Document_No	APC	TA	EOR	Amount	Blk	Final	OA	Oblig	AFCR	Dept	FY	Basic
W62MGE01160401	A4BD	23	26FA	\$398.00	Y11	A	76	1	1	21	0	2020
W62MGE01160401	A4BD	32	26FA	\$398.00	Y15		76	1	1	21	0	2020
W62MGE01180400	A4BD	23	26FA	\$82.04	Y11	A	76	1	1	21	0	2020
W62MGE01220402	A4BD	32	26FA	\$315.00	000		76	1	2	21	0	2020
W62MGE01220402	A4BD	44	26FA	\$315.00	000		76	1	2	21	0	2020
W62MGE01220402	A4BD	23	26FA	\$315.00	Y11	A	76	1	1	21	0	2020
W62MGE01220402	A4BD	32	26FA	\$315.00	000		76	1	2	21	0	2020

Document Count: 6457

After Retrieval - Click on a Row for Supply Data

Document No: W62MGE01180400 **Q_Orgn:** 1 **NIIN:** 01-460-2439 **Nomen:** PUMP ASSEMBLY,POWER

Price: \$82.04 **FSC:** 2530 **UI:** EA **MATCAT:** K21N5 **MRC:** F **RC:** F **ARI:**

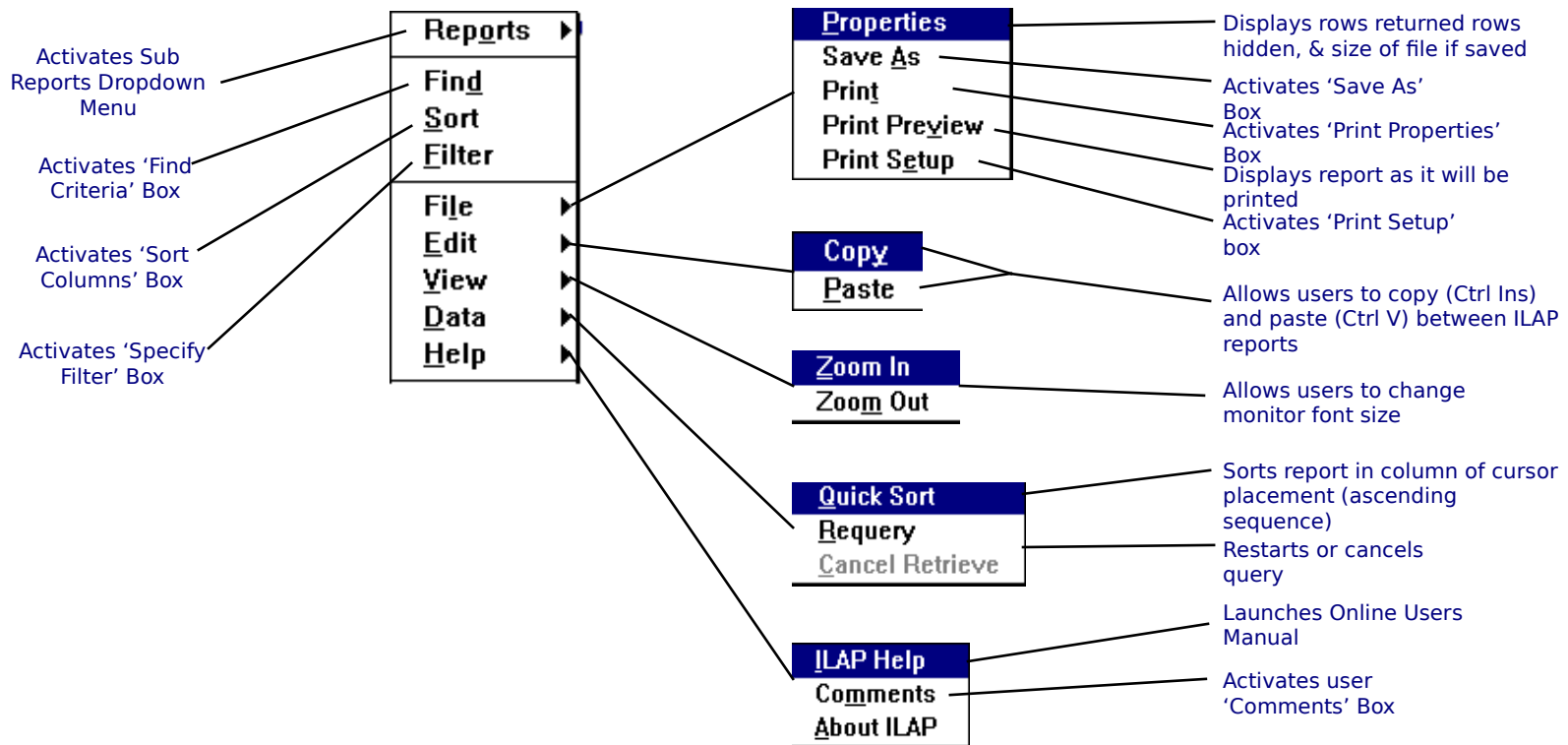
SCMC: 9K **AIMI:** **DLR:** F **SOS:** AKZ **AAC:** D **EC:** C

RICC: 0 **ARC:** X **CIIC:** U **PN:** A **Catalog D_Upd:** 01-Jun-00



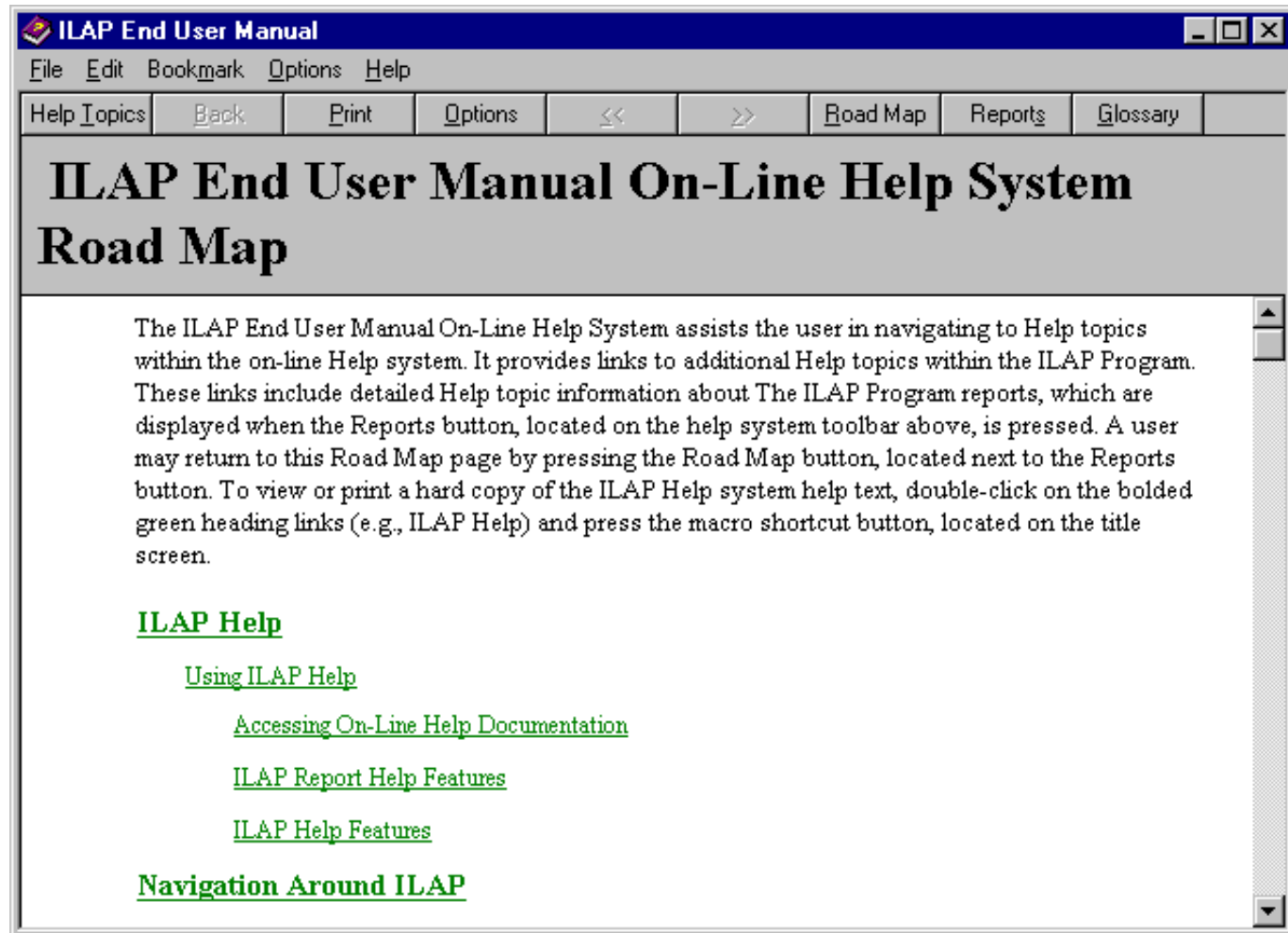
ILAP Functionality

✓ **After retrieving information, right mouse click to activate drop-down menu**



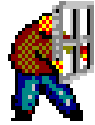


ILAP Functionality

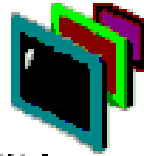




Remote Access Connection



Remote
Application
Manager



Citrix
WinFrame



Citrix Program
Neighborhood

- ✓ **Connect using Citrix WinFrame Remote Access Software via TCP/IP through Local Area Network (LAN)**
 - ✓ **WinFrame Client software loaded on users PC**
 - ✓ **Limited Number of Concurrent Users based on Site License**
 - ✓ **User must obtain a user account to gain access**
-



User Accounts

- ✓ **User accounts controlled locally by ILAP Systems Administrator**
- ✓ **Accounts governed by local SOP**
- ✓ **See Systems Administrator list for your installation to obtain an ILAP account on your installation**



Emerging Capability AWCF Credit Tracking

- ✓ **Only tracks OMA to AWCF transactions**
- ✓ **Tracking Turn-ins and Retrograde**
- ✓ **Three Categories**
 - Unit Turn-in
 - Retrograde on Unit Document
 - Retrograde on S1 Document
- ✓ **Report will include data from SARSS, ISB Depot Return Summary and STANFINS AVKNXG**



Summary

- ✓ **ILAP is being modified to provide Single Stock Fund managers a tool to use**
- ✓ **The ILAP reports are changing as Single Stock Fund implementation matures**
- ✓ **Ideas for ILAP reports are solicited - reports can be designed to meet your needs!**